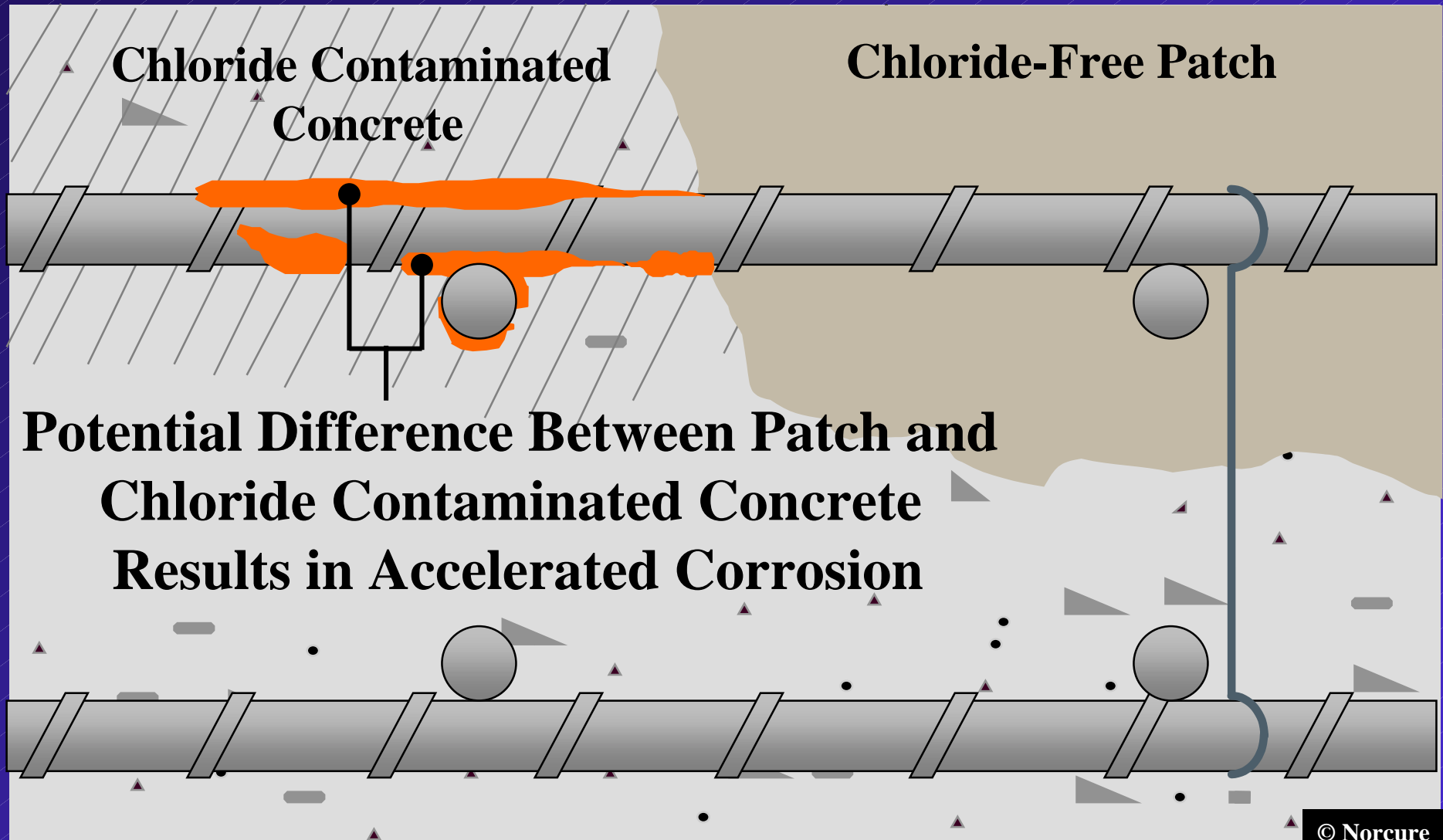




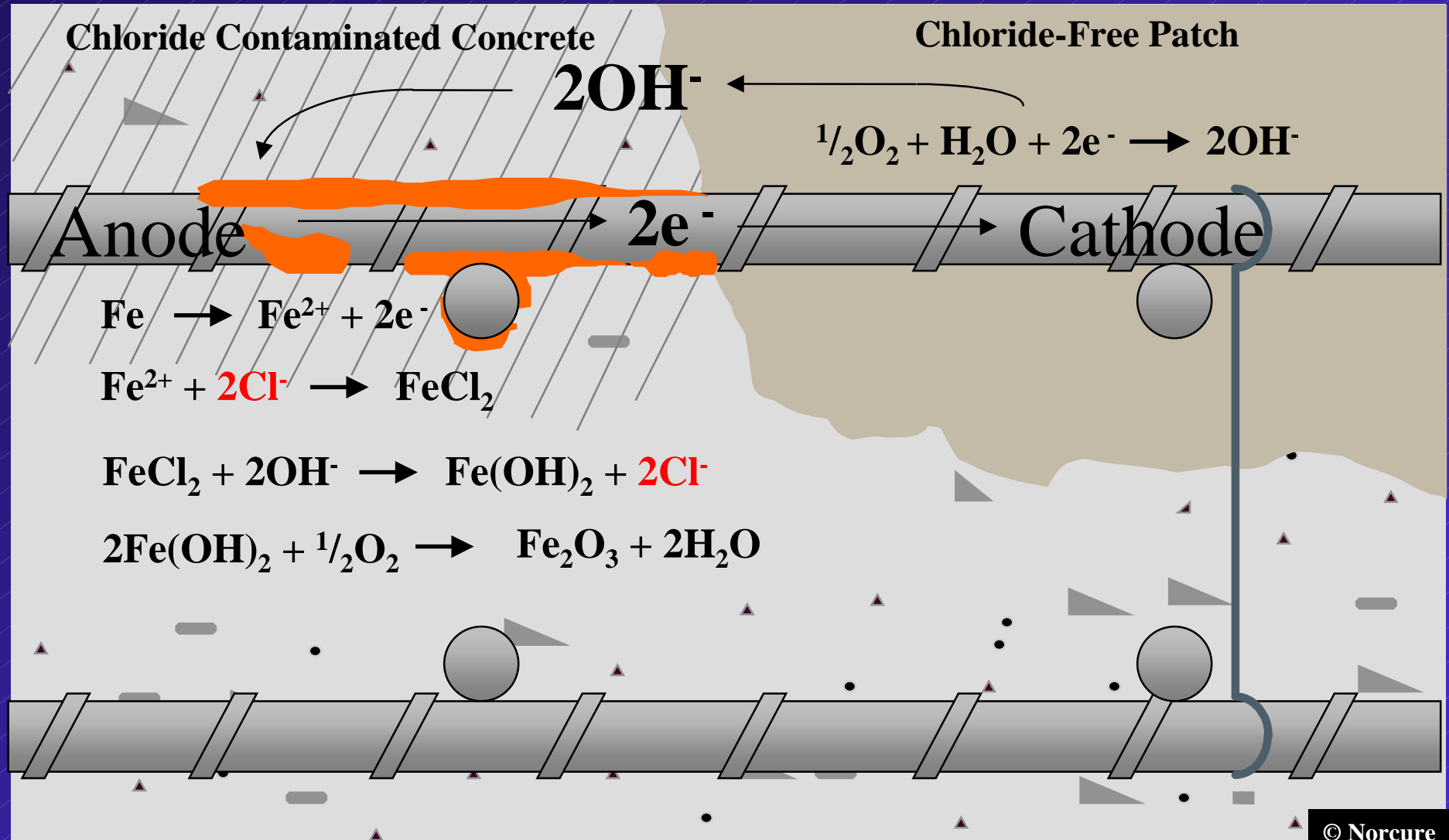
Norcure Chloride Removal Systems

Galvashield XP Embedded Galvanic Anodes

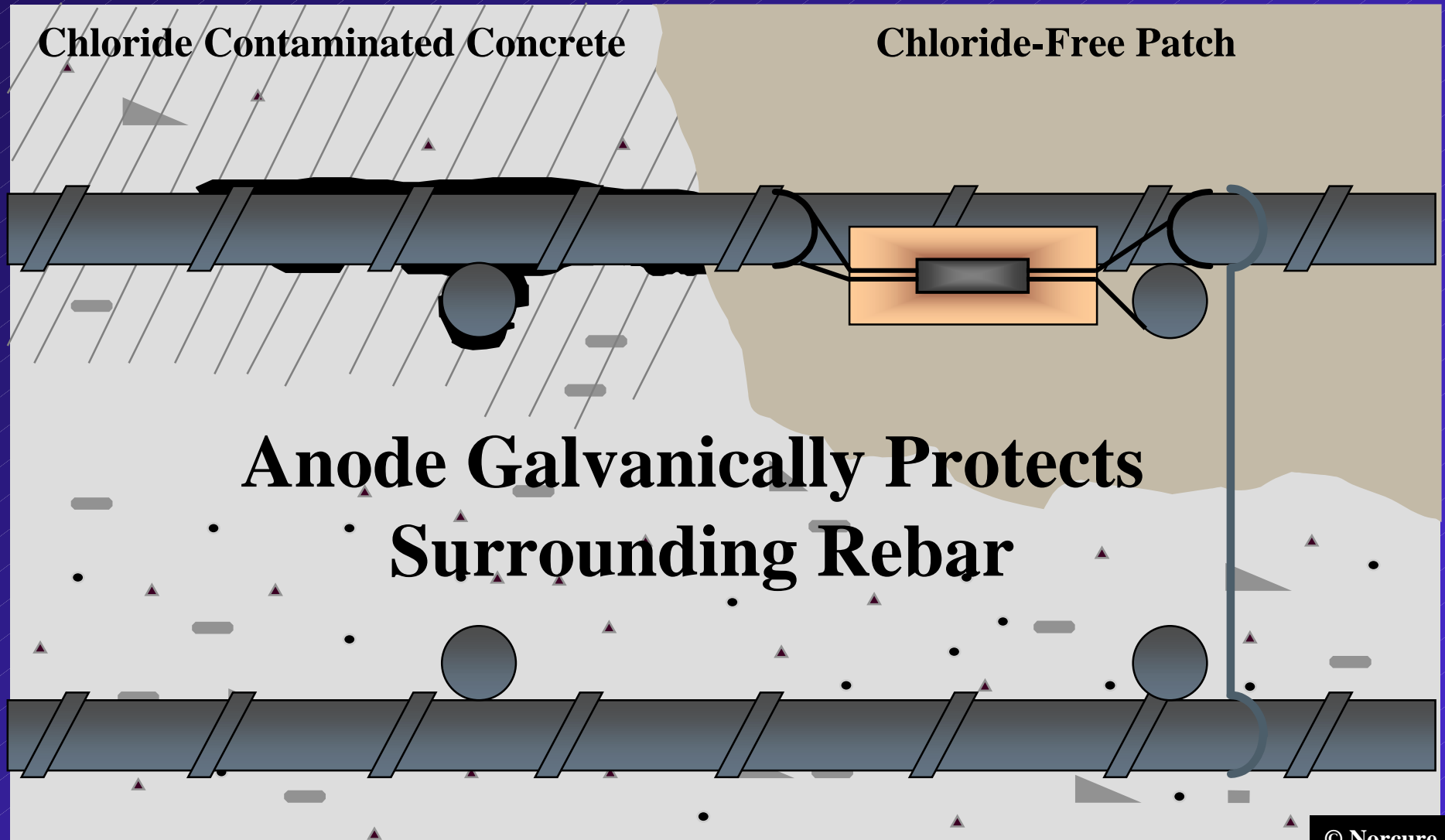
Patch Accelerated Corrosion



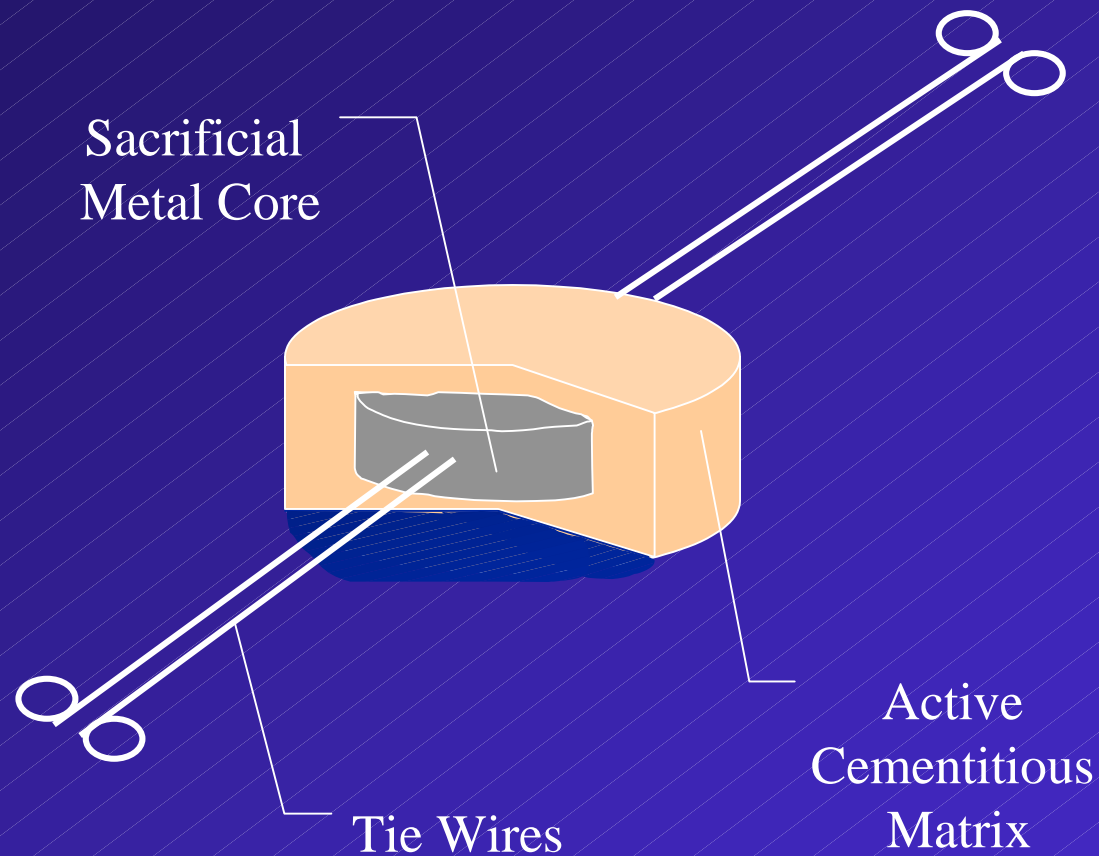
Patch Accelerated Corrosion



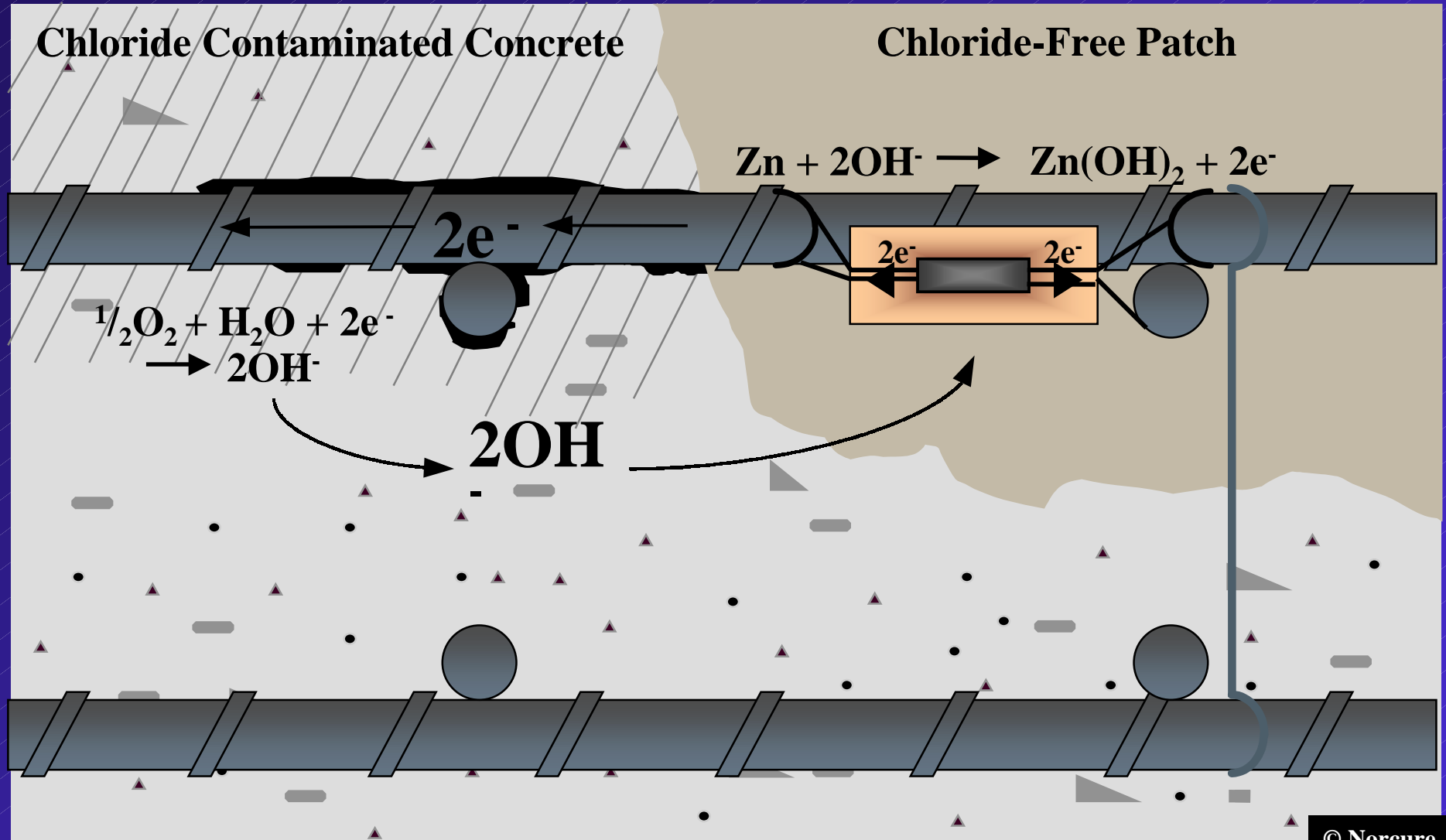
Installed Galvanic Anode



Embedded Galvanic Anode



Installed Galvanic Anode

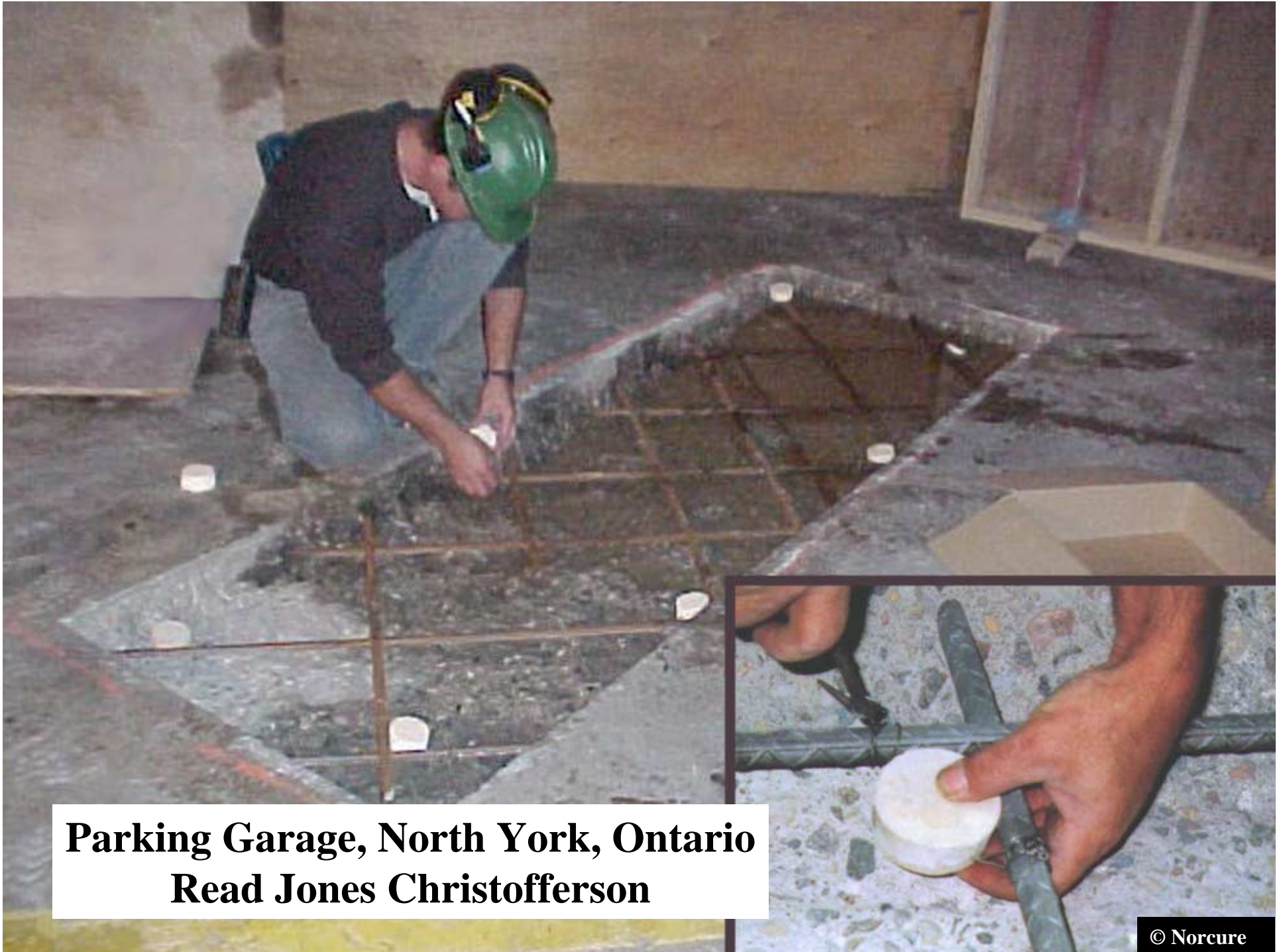


Embedded Galvanic Anode Installation



- ◆ Concrete is removed from in and around the steel reinforcement
- ◆ The reinforcement should be cleaned appropriately
- ◆ The anode unit should be positioned and attached to clean reinforcement using the tie wires and tightened
- ◆ The continuity between the tie wires and the cleaned reinforcing steel should be confirmed
- ◆ With the anode(s) now in position, the repair can be completed using the appropriate repair materials

Typical Installations



**Parking Garage, North York, Ontario
Read Jones Christofferson**

Balcony Repairs Outrigger Reef Hotel, Waikiki, Hawaii





**Woolworth Avenue Bridge Deck over I-480,
Omaha, Nebraska
Nebraska Department of Roads**

MTQ Auto Route #73 & #20 Québec City, Québec
Ministère des Transports de Québec



I-480 Pier 2B in Omaha, Nebraska, USA

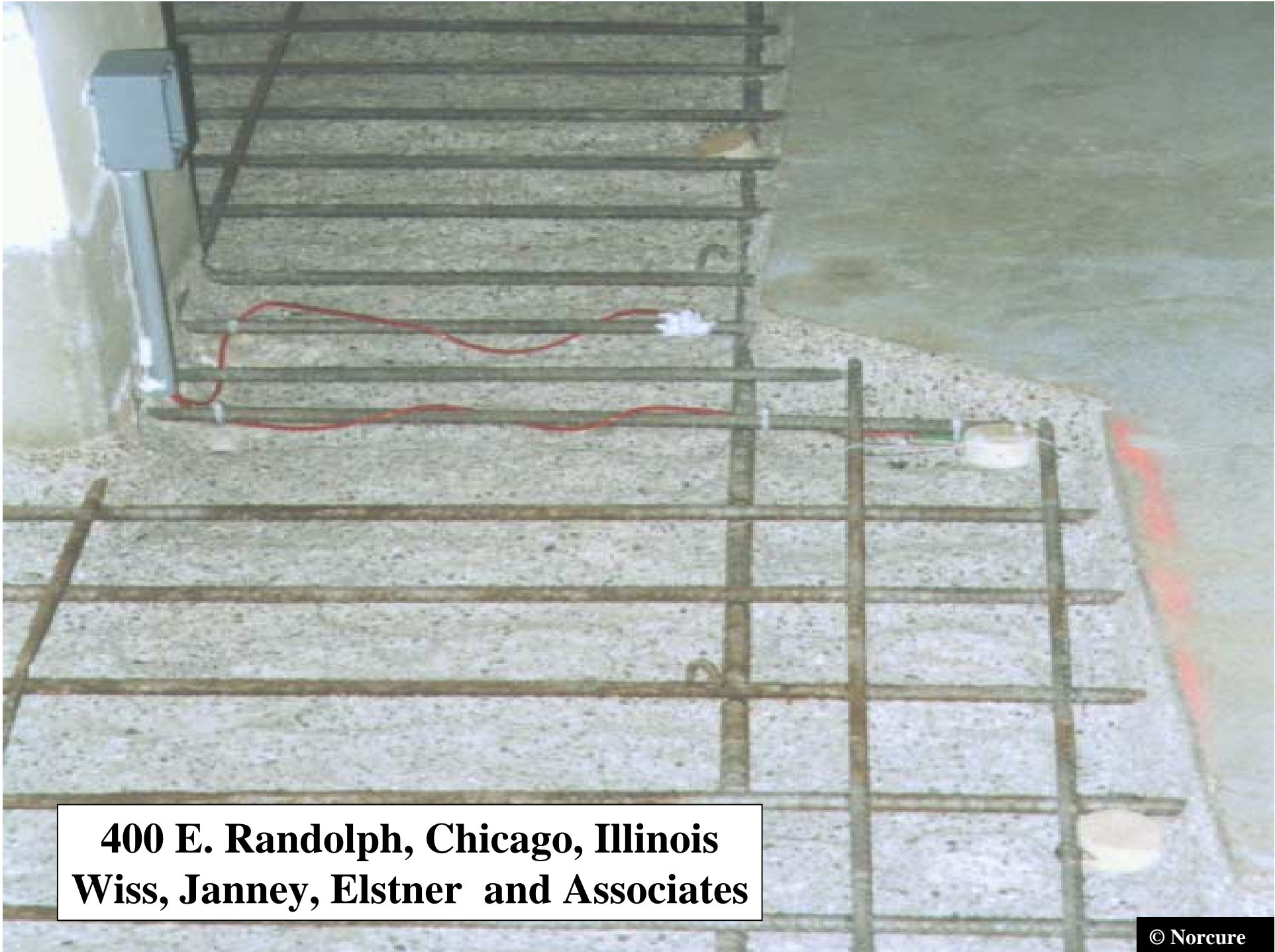


**Pulp Mill Beam Repairs,
Northern Alberta**





**400 E. Randolph, Chicago, Illinois
Wiss, Janney, Elstner and Associates**



**400 E. Randolph, Chicago, Illinois
Wiss, Janney, Elstner and Associates**



Quick and Easy Installation



**Perimeter Highway (PTH 100) over Red River, Winnipeg, Manitoba
Manitoba Department of Highways and Transportation**

**Bridge Deck Repair
Jubilee Overpass, Winnipeg, Manitoba**



**Bridge Deck Replacement
North Western Mutual Parking Garage
Milwaukee, Wisconsin**



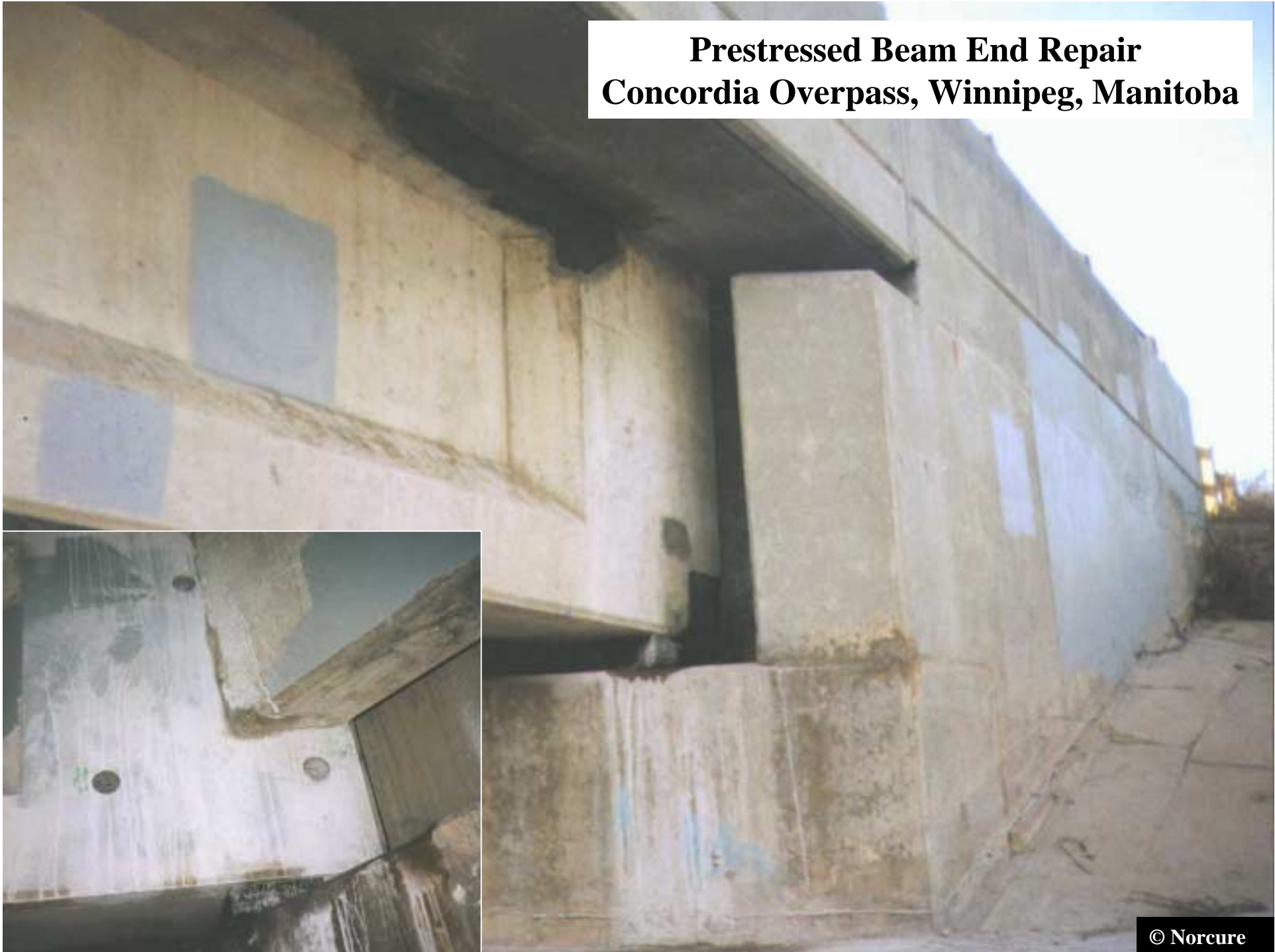


**Prestressed Concrete Girders in Parking Garage
Southern Ontario, Canada**



**Iowa 192 Viaduct, Council Bluffs, Iowa
Iowa DOT**

**Prestressed Beam End Repair
Concordia Overpass, Winnipeg, Manitoba**





**PT Anchor Repairs
Watergate Complex, Washington, D.C.**